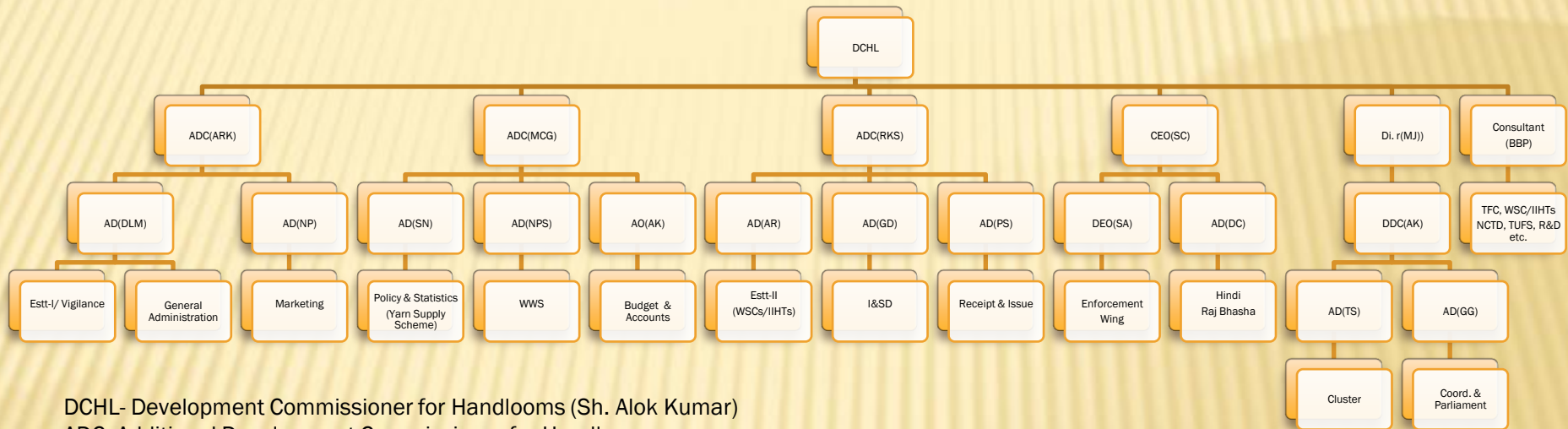


# Organisation Chart of office of the Development Commissioner for Handlooms



DCHL- Development Commissioner for Handlooms (Sh. Alok Kumar)

ADC- Additional Development Commissioner for Handlooms

ARK- Shri Anil Raj Kumar

MCG- Shri M C Gupta

RKS- Shri R K Sahu

CEO- Chief Enforcement Officer (Shri Suresh Chandra)

Dir. (MJ)- Director (Shri Manoj Jain)

DDC(AK)- Deputy Development Commissioner for Handlooms (Sh. Akhilesh Kumar)

Consultant (BBP)- Consultant (Shri B B Paul)

WWS- Weavers Welfare Scheme

I&SD- Infrastructure & Skill Development

AO (AK)- Accounts Officer (Shri Ashok Kumar)

AD- Assistant Director

DLM- Shri Devi Lal Meena, NP- Shri N Purushothaman, SN- Shri Surender Negi, NPS- Shri Narottam Prasad, AR- Smt. Anita Rani, DC- Shri Dinesh

Chandra, TS- Shri Tapas Sarkar, GG- Shri Gajendra Gupta, GD- Shri Gurcharan Dass, PS- Shri Purushotam Singh

DEO(SA)- Deputy Enforcement Officer (Shri S Adinarayan)